



**Council Rock School District, PA
School Board Approved Plan**

Revised: December 14, 2018

ES Utilization Statistics

Elementary School	2018-19 Capacity	Total Headcount	Total Enrolled ¹	School Board Approved ES Plan Estimated Enrollment ^{1,2}	School Board Approved ES Plan Estimated Utilization
Churchville ES	731	612	583	517	70.7%
Goodnoe ES	893	766	735	717	80.2%
Hillcrest ES	542	567	538	456	84.0%
Holland ES	429	342	329	371	86.4%
Maureen M. Welch ES	731	612	580	521	71.2%
Newtown ES	821	726	703	686	83.5%
Richboro ES	542	399	376	359	66.2%
Rolling Hills ES	516	447	426	412	79.8%
Sol Feinstone ES	894	674	646	742	82.9%
Wrightstown ES	466	231	221	358	76.7%
Total	6565	5376	5135	5135	78.2%

Elementary School	2018-19 Capacity	Enrolled Utilization	School Board Approved ES Plan Estimated Utilization
Churchville ES	731	79.8%	70.7%
Goodnoe ES	893	82.3%	80.2%
Hillcrest ES	542	99.2%	84.0%
Holland ES	429	76.7%	86.4%
Maureen M. Welch ES	731	79.3%	71.2%
Newtown ES	821	85.6%	83.5%
Richboro ES	542	69.3%	66.2%
Rolling Hills ES	516	82.6%	79.8%
Sol Feinstone ES	894	72.3%	82.9%
Wrightstown ES	466	47.4%	76.7%
Total	6565	78.2%	78.2%

¹ AM and PM Kindergarden Students are counted as 50% because they are half-day programs and two sessions can use one classroom, one in the AM and the other in the PM.

² Estimated enrollment is calculated by adding the 2018-19 Out of District/Unmatched students to their currently enrolled school, plus the K-6th grade live-in totals within each option.

Estimated Enrollment for each school may not equal the Total due to rounding.

Student data as of November 2018 Council Rock School District 2018-19 student database.

ES Estimated Enrollment by Grade

School Board Approved ES Plan: Estimated Enrollment ²										
ES Zones	KA	KP	KF	01	02	03	04	05	06	Total ¹
Churchville ES	35	14	2	71	87	78	92	78	84	517
Goodnoe ES	32	27	2	112	93	115	133	110	122	717
Hillcrest ES	34	19	1	79	62	70	62	75	80	456
Holland ES	16	15	0	66	51	68	62	66	42	371
Maureen M. Welch ES	37	24	1	62	77	74	93	99	84	521
Newtown ES	26	29	0	88	96	119	101	125	129	686
Richboro ES	18	18	0	48	61	56	49	54	73	359
Rolling Hills ES	24	18	3	62	71	63	61	67	64	412
Sol Feinstone ES	41	16	1	74	110	128	118	142	140	742
Wrightstown ES	16	23	1	64	53	62	52	49	57	358

¹ AM and PM Kindergarden Students are counted as 50% because they are half-day programs and two sessions can use one classroom, one in the AM and the other in the PM.

² Estimated enrollment is calculated by adding the 2018-19 Out of District/Unmatched students to their currently enrolled school, plus the K-6th grade live-in totals within each option.

ES Option Impacts

Option	Total K-6 Live-In Students Impacted
School Board Approved ES Zone	702

2017-18 ES Zone	School Board Approved ES Zone	Total K-6 Live-In Students
Churchville ES	Churchville ES	484
Churchville ES	Richboro ES	142
Goodnoe ES	Goodnoe ES	718
Hillcrest ES	Hillcrest ES	482
Hillcrest ES	Holland ES	82
Holland ES	Holland ES	304
Maureen M. Welch ES	Churchville ES	55
Maureen M. Welch ES	Maureen M. Welch ES	551
Newtown ES	Goodnoe ES	28
Newtown ES	Newtown ES	656
Richboro ES	Richboro ES	193
Richboro ES	Wrightstown ES	215
Rolling Hills ES	Richboro ES	42
Rolling Hills ES	Rolling Hills ES	433
Sol Feinstone ES	Sol Feinstone ES	686
Wrightstown ES	Newtown ES	54
Wrightstown ES	Sol Feinstone ES	84
Wrightstown ES	Wrightstown ES	150

Note: AM and PM kindergarden students are counted as 1 student in the impact tables.

Key: Green represents K-6th "Live-In" students who live in the boundary and are not impacted by the plan. Pink represents the number of K-6th "Live-In" students who live in the boundary and are impacted by the plan.

ES Option Impacts by Grade

Grade	Live-In Students Impacted
KA	33
KP	33
KF	1
1	102
2	87
3	133
4	90
5	107
6	116

2017-18 ES Zone	School Board Approved ES Zone	KA	KP	KF	01	02	03	04	05	06
Churchville ES	Churchville ES	32	13	2	67	76	71	78	72	73
Churchville ES	Richboro ES	8	6		19	24	19	12	22	32
Goodnoe ES	Goodnoe ES	32	25	2	109	91	110	127	102	120
Hillcrest ES	Hillcrest ES	34	19	1	79	62	70	62	75	80
Hillcrest ES	Holland ES	4	2		15	11	15	13	17	5
Holland ES	Holland ES	12	13		51	40	53	49	49	37
Maureen M. Welch ES	Churchville ES	3	1		4	9	7	14	6	11
Maureen M. Welch ES	Maureen M. Welch ES	37	24	1	62	77	74	93	99	84
Newtown ES	Goodnoe ES		2		3	2	5	6	8	2
Newtown ES	Newtown ES	26	21		83	90	108	95	116	117
Richboro ES	Richboro ES	8	12		26	32	26	31	22	36
Richboro ES	Wrightstown ES	16	13	1	39	23	43	25	24	31
Rolling Hills ES	Richboro ES	2			3	5	11	6	10	5
Rolling Hills ES	Rolling Hills ES	24	18	3	62	71	63	61	67	64
Sol Feinstone ES	Sol Feinstone ES	41	15	1	60	103	106	108	131	121
Wrightstown ES	Newtown ES		8		5	6	11	4	9	11
Wrightstown ES	Sol Feinstone ES		1		14	7	22	10	11	19
Wrightstown ES	Wrightstown ES		8		21	30	18	24	23	26

Key: Green represents K-6th "Live-In" students who live in the boundary and are not impacted by the plan. Pink represents the number of K-6th "Live-In" students who live in the boundary and are impacted by the plan.

ES to MS Feeder Patterns

2017-18 ES Zone	2017-18 MS Zone	Total K-6 Live-In	ES Attendance
Churchville ES	Holland MS	650	100%
Goodnoe ES	Newtown MS	775	100%
Hillcrest ES	Holland MS	534	100%
Holland ES	Holland MS	297	100%
Maureen M. Welch ES	Richboro MS	635	100%
Newtown ES	Newtown MS	681	100%
Richboro ES	Richboro MS	414	100%
Rolling Hills ES	Richboro MS	462	100%
Sol Feinstein ES	Newtown MS	701	100%
Wrightstown ES	Newtown MS	323	100%

School Board Approved ES Zone	School Board Approved MS Zone	Total K-6 Live-In	ES Attendance
Churchville ES	Holland MS	539	100%
Goodnoe ES	Newtown MS	746	100%
Hillcrest ES	Holland MS	482	100%
Holland ES	Holland MS	386	100%
Maureen M. Welch ES	Holland MS	551	100%
Newtown ES	Newtown MS	710	100%
Richboro ES	Holland MS	377	100%
Rolling Hills ES	Holland MS	433	100%
Sol Feinstein ES	Newtown MS	770	100%
Wrightstown ES	Newtown MS	365	100%

MS Utilization Statistics

Middle School	2017-18 Capacity	MS Option Capacity	Total Enrolled	MS Zone Recommendation with School Board Edits Estimated Enrollment ¹
Holland MS	980	980	979	898
Newtown MS	980	980	801	882
Richboro MS	580	CLOSED	CLOSED	CLOSED
Total	2540	1960	1780	1780

Middle School	2017-18 Capacity	MS Option Capacity	Enrolled Utilization	School Board Approved MS Zone Estimated Utilization
Holland MS	980	980	99.9%	91.6%
Newtown MS	980	980	81.7%	90.0%
Richboro MS	580	CLOSED	CLOSED	CLOSED
Total	2540	1960	70.1%	90.8%

¹ Estimated enrollment is calculated by adding the 2018-19 Out of District/Unmatched students to their currently enrolled school, plus the 7th-8th grade live-in totals within each option.

Student data as of November 2018 Council Rock School District 2018-19 student database.

MS Option Impacts

Option	Total 7-8 Live-In Students Impacted
School Board Approved MS Zone	530

2017-18 MS Zone	School Board Approved MS Zone	Total 7-8 Live-In Students
Holland MS	Holland MS	457
Newtown MS	Newtown MS	786
Richboro MS	Holland MS	440
Richboro MS	Newtown MS	90

Key: Green represents 7-8th “Live-In” students who live in the boundary and are not impacted by the plan. Pink represents the number of 7-8th “Live-In” students who live in the boundary and are impacted by the plan.

MS to HS Feeder Patterns

2017-18 MS Zone	2017-18 HS Zone	Total 7-8th Live-In	MS Attendance
Holland MS	Council Rock HS South	497	100%
Newtown MS	Council Rock HS North	816	100%
Richboro MS	Council Rock HS South	509	100%

School Board Approved MS Zone	School Board Approved HS Zone	Total 7-8th Live-In	MS Attendance
Holland MS	Council Rock HS South	897	100%
Newtown MS	Council Rock HS North	876	100%

HS Utilization Statistics

High School	2017-18 Capacity	Total Enrolled	School Board Approved HS Plan Estimated Enrollment ¹
Council Rock HS North	2761	1647	1800
Council Rock HS South	2397	2039	1886
Total	5158	3686	3686

High School	2017-18 Capacity	Enrolled Utilization	School Board Approved HS Plan Estimated Utilization
Council Rock HS North	2761	59.7%	65.2%
Council Rock HS South	2397	85.1%	78.7%
Total	5158	71.5%	71.5%

¹ Estimated enrollment is calculated by adding the 2018-19 Out of District/Unmatched students to their currently enrolled school, plus the 9th-12th grade live-in totals within each option.

Student data as of November 2018 Council Rock School District 2018-19 student database.

HS Option Impacts

Option	Total 9-12th Live-In Students
HS Zone Recommendation with School Board Edits	176

2017-18 HS Zone	School Board Approved HS Zone	Total 9-12th Live-In Students
Council Rock HS North	Council Rock HS North	1600
Council Rock HS South	Council Rock HS North	176
Council Rock HS South	Council Rock HS South	1881

Key: Green represents 9-12th "Live-In" students who live in the boundary and are not impacted by the plan. Pink represents the number of 9-12th "Live-In" students who live in the boundary and are impacted by the plan.

Council Rock School District, PA School Board Approved ES Zones



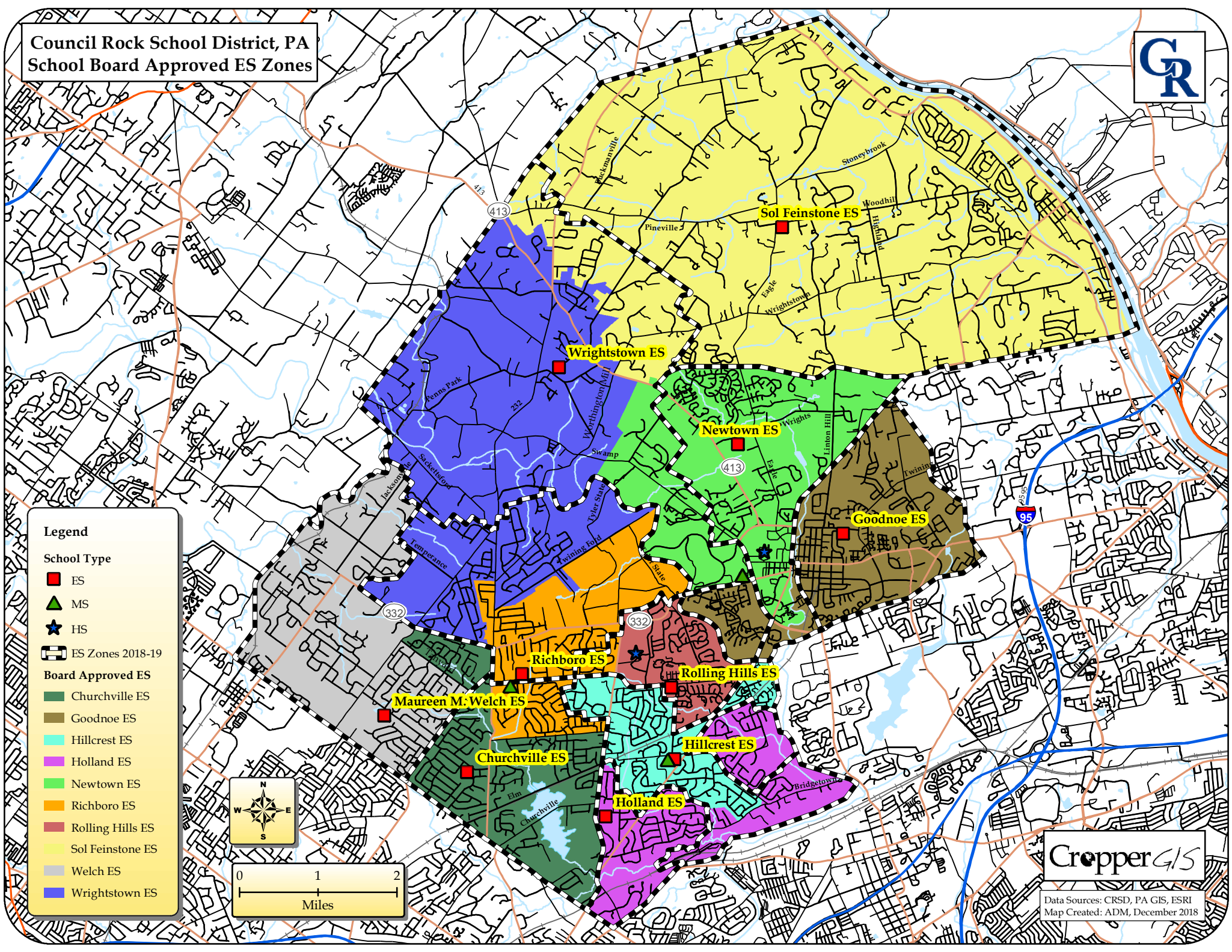
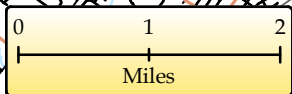
Legend

School Type

- ES
- ▲ MS
- ★ HS
- ES Zones 2018-19

Board Approved ES

- Churchville ES
- Goodnoe ES
- Hillcrest ES
- Holland ES
- Newtown ES
- Richboro ES
- Rolling Hills ES
- Sol Feinstone ES
- Welch ES
- Wrightstown ES



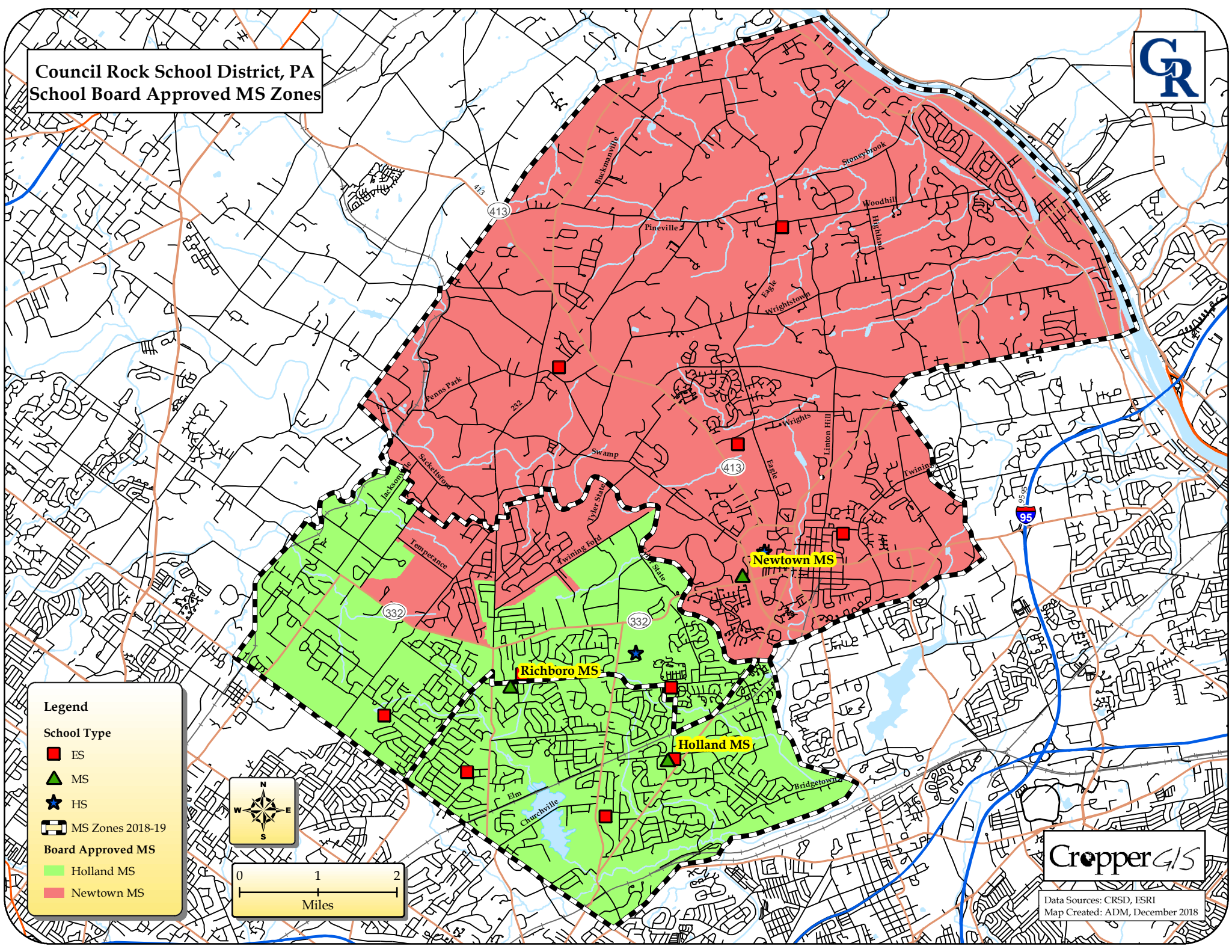
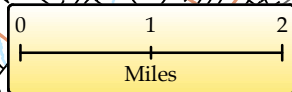
Cropper GIS

Data Sources: CRSD, PA GIS, ESRI
Map Created: ADM, December 2018

Council Rock School District, PA
School Board Approved MS Zones



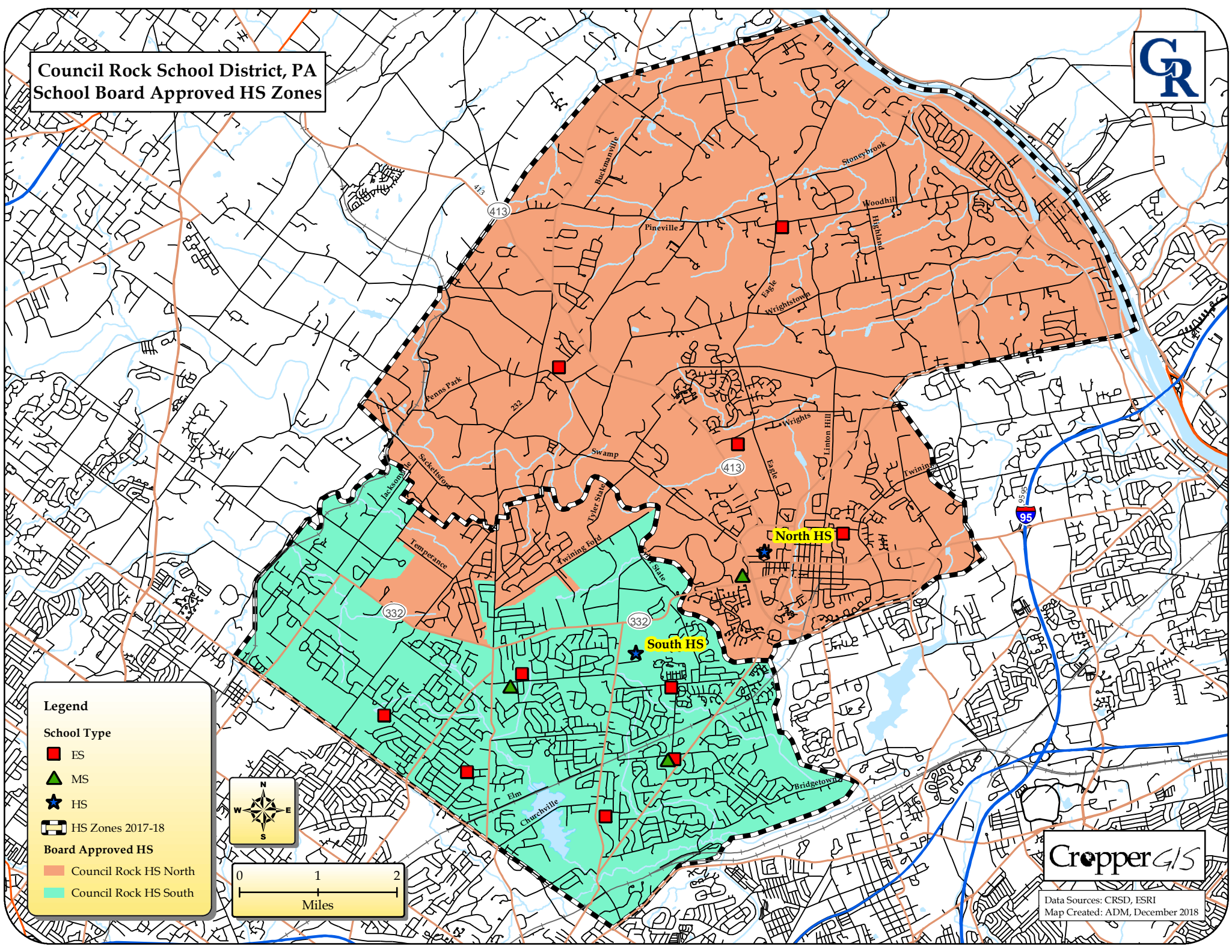
- Legend**
- School Type**
- ES
 - MS
 - HS
 - MS Zones 2018-19
- Board Approved MS**
- Holland MS
 - Newtown MS



Cropper GIS

Data Sources: CRSD, ESRI
Map Created: ADM, December 2018

Council Rock School District, PA
School Board Approved HS Zones



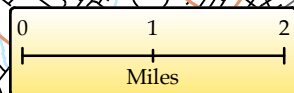
Legend

School Type

- ES
- ▲ MS
- ★ HS
- HS Zones 2017-18

Board Approved HS

- Council Rock HS North
- Council Rock HS South



CropperGIS

Data Sources: CRSD, ESRI
Map Created: ADM, December 2018